

Specific Data Sheet

DC power surge protector DS2x0-xxDC series

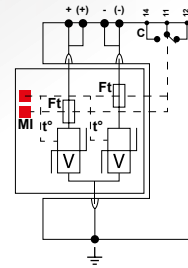
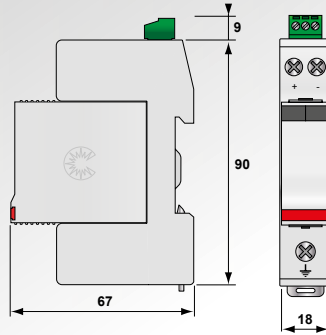


CITEL

I_{max}
20-40 kA



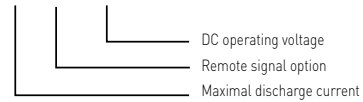
DS230-48DC



C: Remote signalling contact
V: Varistor
Ft: Thermal fuse
t°: Thermal disconnection system
MI: Disconnection indicators

- From 12 to 350 Vdc
- Very low Up protection level
- Compact design
- I_{max}: 20 to 40 kA
- Pluggable module
- Remote signaling (option)
- Encapsulated

DS2xx S-xxxDC



Characteristics

CITEL Model		DS220-12DC	DS220-24DC	DS230-48DC	DS240-75DC	DS240-95DC	DS240-110DC	DS240-130DC	DS240-220DC	DS240-280DC	DS240-350DC
Description		DC or PV power surge protector									
Network		12Vdc	24Vdc	48 Vdc	75 Vdc	95 Vdc	110 Vdc	130 Vdc	220 Vdc	280 Vdc	350 Vdc
Connection mode		+/-/PE	+/-/PE	+/-/PE	+/-/PE	+/-/PE	+/-/PE	+/-/PE	+/-/PE	+/-/PE	+/-/PE
Protection mode(s)		CM	CM	CM	CM	CM	CM	CM	CM	CM	CM
Max. DC operating voltage	U _c	24 Vdc	38 Vdc	65 Vdc	100 Vdc	125 Vdc	150 Vdc	180 Vdc	275 Vdc	350 Vdc	460 Vdc
Max. AC operating voltage	U _c	20 Vac	30 Vac	50 Vac	75 Vac	95 Vac	115 Vac	150 Vac	210 Vac	275 Vac	350 Vac
Residual current - Leakage current at U _c	I _{pe}	< 0.1 mA	< 0.1 mA	< 0.1 mA	< 0.1 mA	< 0.1 mA	< 0.1 mA	< 0.1 mA	< 0.1 mA	< 0.1 mA	< 0.1 mA
Max. Load current (if connection serie)	I _L	20 A	20 A	20 A	20 A	20 A	20 A	20 A	20 A	20 A	20 A
Nominal discharge current - 15 x 8/20 μs impulses	I _n	10 kA	10 kA	15 kA	20 kA	20 kA	20 kA	20 kA	20 kA	20 kA	20 kA
Max. discharge current - max. withstand I _a 8/20 μs by pole	I _{max}	20 kA	20 kA	20 kA	40 kA	40 kA	40 kA	40 kA	40 kA	40 kA	40 kA
CM Protection level @ I _n	U _p	250 V	250 V	300 V	390 V	450 V	500 V	620 V	900 V	1200 V	1400 V
Associated disconnectors											
Thermal disconnector		internal									
Fuses (if required)		Fuses type gG - 20 A	Fuses type gG - 20 A	Fuses type gG - 50 A	Fuses type gG - 50 A	Fuses type gG - 50 A	Fuses type gG - 50 A	Fuses type gG - 50 A	Fuses type gG - 50 A	Fuses type gG - 50 A	Fuses type gG - 50 A
Mechanical characteristics											
Dimensions		see diagram									
Connection to Network		by screw terminals: 1.5-10mm ² (actives wires) and 2.5-25mm ² (ground)									
Disconnection indicator		2 mechanical indicators									
Remote signaling of disconnection		Option DS220S-12DC : output on changeover contact	Option DS220S-24DC : output on changeover contact	Option DS230S-48DC : output on changeover contact	Option DS240S-75DC : output on changeover contact	Option DS240S-95DC : output on changeover contact	Option DS240S-110DC : output on changeover contact	Option DS240S-130DC : output on changeover contact	Option DS240S-220DC : output on changeover contact	Option DS240S-280DC : output on changeover contact	Option DS240S-350DC : output on changeover contact
Spare unit		DSM220-12DC	DSM220-24DC	DSM230-48DC	DSM240-75DC	DSM240-95DC	DSM240-110DC	DSM240-130DC	DSM240-220DC	DSM240-280DC	DSM240-350DC
Mounting		Symmetrical rail 35 mm [EN60715]									
Operating temperature		-40/+85°C									
Protection rating		IP20									
Housing material		Thermoplastic UL94-V0									
Standards compliance		IEC 61643-11 / EN 61643-11 / UL1449 ed.4 / EN 50539-11									
Part number		390101	390501	390401	310601	310301	310701	310801	310201	310501	310901

