

**ALPHA  
OUTBACK  
ENERGY**

**Models:**

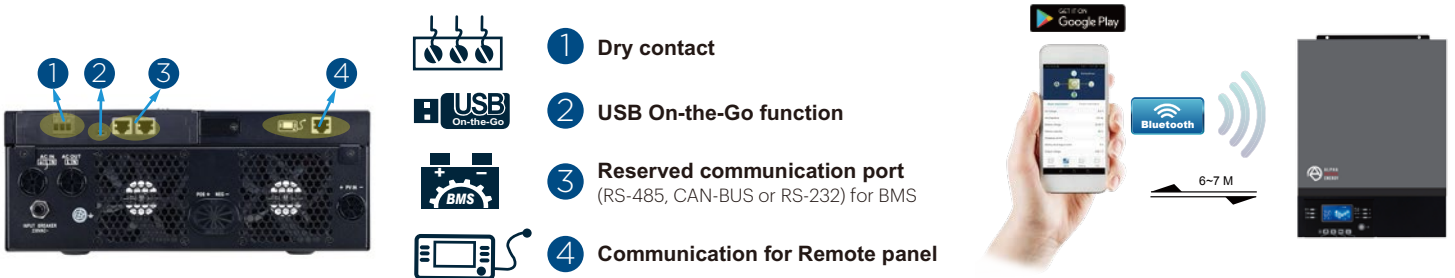
- SPC III 1500-24
- SPC III 3000-24
- SPC III 5000-48



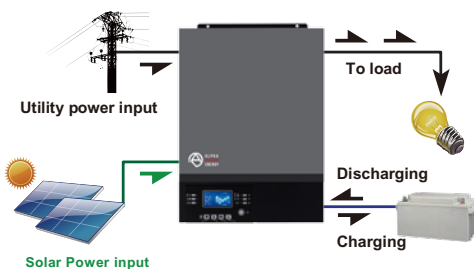
# SPC III Solar Off Grid-Hybrid Inverters

**Features**

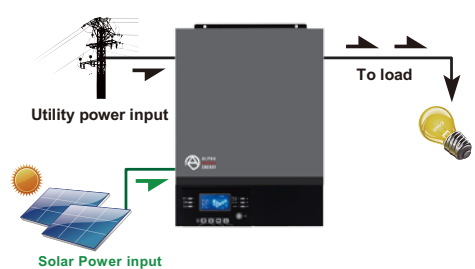
- Output Power Factor 1
- 1500, 3000 and 5000 Watts
- Built-in MPPT Charge Controller
- PV Array Open Circuit Voltage up to 500VDC
- Up to 5000W PV Array Power
- Detachable LCD control module with various communications. Can be turned to remote panel.
- Integrated Bluetooth for mobile monitoring (Android)
- Reserved communication port for BMS (RS485, CAN-BUS or RS232)
- Lithium-ion battery compatibility
- Replaceable fan design for ease of maintenance
- Battery Independancy: Supply load from Grid or PV, even battery is not available
- Configurable AC/PV output usage timer and prioritization
- Selectable high power charging current
- Selectable input voltage range for home appliances and personal computers
- Compatible to Utility Mains or generator input
- Auto restart while AC is recovering
- Cold start function when grid is not available
- GPRS module (box version) for remote monitoring



With battery connected



Without battery connected





MODEL	SPC III 1500-24	SPC III 3000-24	SPC III 5000-48
Rated Power	1500VA/1500W	3000VA/3000W	5000VA/5000W
<b>INPUT</b>			
Voltage	230Vac		
Voltage Range	90-280 Vac		
Frequency Range	50 Hz/60 Hz (Auto sensing)		
<b>OUTPUT</b>			
AC Voltage Regulation (Batt. Mode)	230Vac ± 5%		
Surge Power	3000VA	6000VA	10000VA
Efficiency (Peak)	90% - 93%		
Transfer Time	15 ms		
Waveform	Pure sine wave		
No Load Power Consumption	<35W for the 1500 & 3000 models; < 50W for the 5k		
DC Voltage (Optional)	12 Vdc ± 5%, 100W		
<b>EFFICIENCY</b>			
Battery Voltage	24 Vdc		48 Vdc
Floating Charge Voltage	27 Vdc		54 Vdc
Overcharge Protection	33 Vdc		63 Vdc
<b>SOLAR CHARGER &amp; AC CHARGER</b>			
Solar Charger Type	MPPT		
Maximum PV Array Power	2000 W		4000 W
Start-up voltage	120 - 380 Vdc		120 - 450 Vdc
MPP Range @ Operating Voltage	150Voc (for both models)		
Maximum PV Array Open Circuit Voltage	400 Vdc		500 Vdc
Maximum Solar Charge Current	60 A dc		80 A dc
Maximum AC Charge Current	40 A dc		60 A dc
Maximum Charge Current	60 A dc		80 A dc
<b>PHYSICAL</b>			
Dimension, D x W x H (mm)	100 x 280 x 390	115 x 300 x 400	10
Net Weight (kgs)	8.5	9	10
Communication Interface	USB, RS232, RS485, Bluetooth , Dry Contact. Optional: GPRS, WIFI, SNMP		
<b>ENVIRONMENT</b>			
Humidity	5% to 95% Relative Humidity (Non-condensing)		
Operating Temperature	-10°C to 50°C		
Storage Temperature	-15°C to 60°C		

All information contained in this document is subject to change without notice.



#### Worldwide Corporate Offices

##### Headquarter Germany

Hansastraße 8  
D-91126 Schwabach  
Tel: +49 9122 79889 0  
Fax: +49 9122 79889 21  
Mail: info@alpha-outback-energy.com

##### Eastern Europe

ee@alpha-outback-energy.com

##### Middle East

me@alpha-outback-energy.com

##### France and Benelux

fbnl@alpha-outback-energy.com

##### Spain

spain@alpha-outback-energy.com

##### Russia

russia@alpha-outback-energy.com

##### Africa

africa@alpha-outback-energy.com